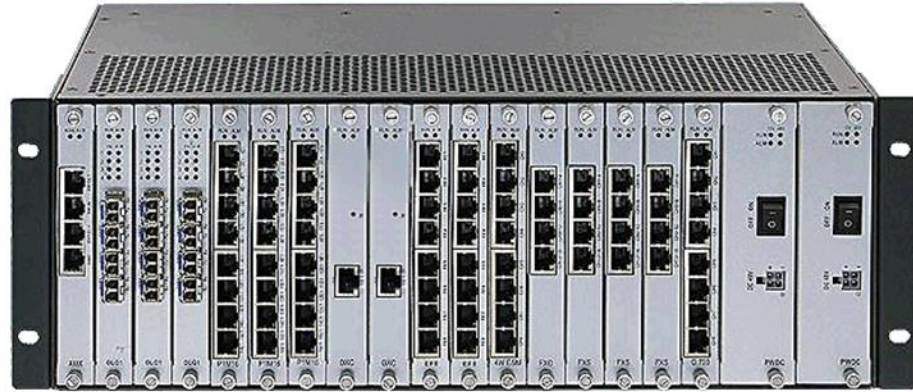


# Model PT-50T 3519

## Aggregate Multi-function Multiplexer



### Introduction

**PT-50T 3519** adopts 3.5U height standard 19" rack mountable chassis for exchange office. The powerful switching matrix provides 7680 x7680 non-blocking cross connections. System supports maximum 240 x E1, and 240 x 64Kbps channels with the expansion chassis. Various network cards, such as PDH, E1 and TDMoIP (Ethernet) uplink card are available for fitting different networks requirement.

System designs with reliability enhancement, such as redundancy controller, 1+1 uplink and dual power supply. It can configure for point to point or point to multipoint networking with different type of transport media; and it can execute D/I (drop/insert) function by cross connection matrix as well.

PT-50T 3519 is managed by the powerful NMS system for real time monitoring, local / remote diagnostic and alarm control. System software can be downloaded remotely through the management control center without engineer on site.

### Features

- Enhanced redundant and hot swappable design for controller, network interface and power supply;
- Versatile concentration platform, support E1, PDH and TDMoIP networking;
- Reliable system design with redundant controller, 1+1 optical link protection and dual power supply;
- Powerful 7680 x 7680 non-blocking matrixes for 240 x E1 cross connection;
- Synchronous data module includes 64Kbps co-directional, N×64Kbps data interface;
- Asynchronous data module with RS232 and RS485 interface;
- Voice module includes FXO, FXS, Hotline, Magneto, Carrier-wave and 2/4-wire E&M interface;
- Data modules include RS232、RS485、V35、G703;
- Total 19 slots: 2 fixed slot for Master control card, 2 fixed slot for Power supply, 15 slots for service business;
- NMS port: RS232 or Ethernet interface;
- Upgrade firmware and software remotely;
- Power supply with AC220V or DC-48V, or AC220V + DC-48V.

### Specification

- |   |  |
|---|--|
| <ul style="list-style-type: none"> <li>➤ E1 Interface</li> <li>Bit rate: 2.048Mbps ±50ppm</li> <li>Code type: HDB3 code, G.703 standard</li> <li>Input impedance: 75Ω or 120Ω</li> <li>Frame structure: G.704, G.706</li> <li>Jitter: G.742, G.823</li> </ul> | <ul style="list-style-type: none"> <li>➤ PDH Optical Interface</li> <li>Bit rate: 150Mbps ±50ppm</li> <li>Output optical power: ≥-15dBm</li> <li>Receiving sensitivity: ≤-35dBm</li> <li>Optical wavelength: 1310nm/1550nm</li> <li>Optical interface connector: SFP/LC</li> </ul> |
|---|--|

**Photel Communication Technology Co., Ltd.**

**Address: 3rd Floor, 8th Building, No. 699-8 Xuanwu Boulevard, Nanjing City, Jiangsu Province, P.R. China 210023**

**Tel: +86 25-8470 1010      Web: www.photel.com.cn**

- **Power Supply**  
Input voltage: -48Vdc or 220Vac  
Voltage range: -36Vdc ~ -72Vdc, 176Vac ~ 264Vac  
Power consumption: <360W
- **Operation Environment**  
Working temperature: -10°C ~ 50°C  
Working humidity: 5% ~ 95 % (non-condensed)  
Storage temperature: -40°C ~ +80°C
- **Ethernet Interface**  
Bit rate: 10/100Mbps, half/full duplex auto  
Standard: IEEE 802.3, IEEE 802.1Q (VLAN)  
Connector: RJ45
- **Mechanical Structure**  
Dimension: 440mm x 276mm x 154mm  
Net weight: 15Kg

## Application

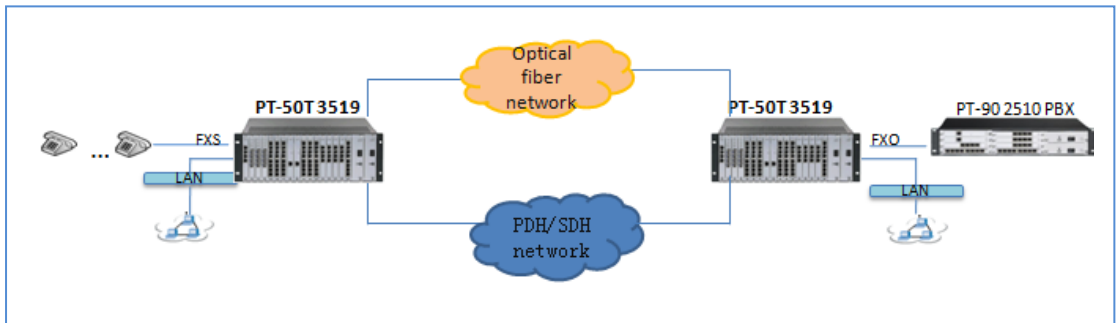


Diagram 1: Point to point

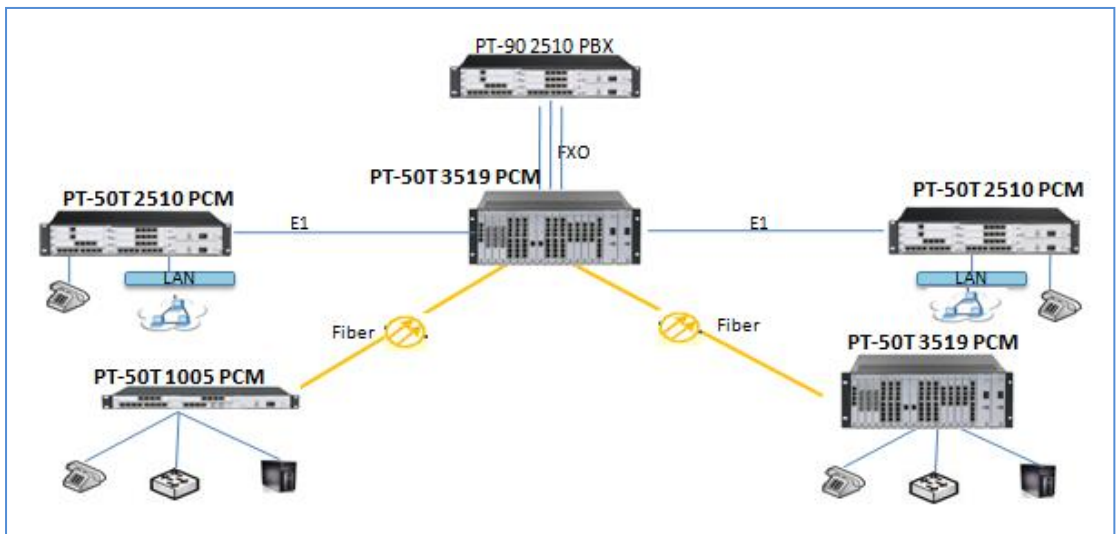


Diagram 2: Point to multipoint